

Heating measurement

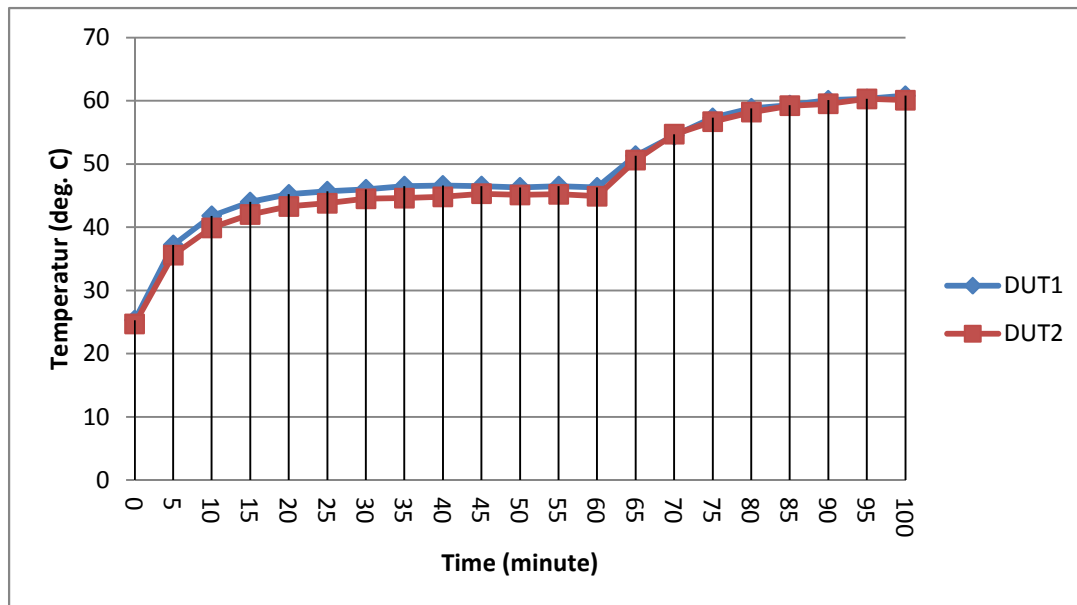
Instrument: Infraray gun TES 1327K epsilon 0.95

Power Supply: Gwinstek SPS-3610 Applied current 8.5A

Testing procedures:

1. DUT be mounted on Aluminum rack.
2. testing point of the DUT: diode symbol of the top cover of DUT.
3. at time zero, set the output of power supply to 36Vdc 0 Amp, measure the testing point of the DUT as reference.
4. set output current to 8.5A, measure the testing point each 5 minutes until temperature become stable, (time length 60 minutes)
5. Shift the DUT from aluminum rack to office desk, continue measure the heat rising until reach stable (another 40 minutes).

DUT 1	Date: Feb. 02, 2015																				
	YJ GBPC2510																				
	Time track	Phase 1 (DUT on Alu. Rack)												Phase 2 (DUT on office desk)							
	0	5	10	15	20	25	30	35	40	45	50	55	60	65	70	75	80	85	90	95	100
	25.3	37.2	41.8	44	45.2	45.7	46	46.5	46.6	46.5	46.3	46.5	46.3	51.3	54.5	57.3	58.8	59.3	60.1	60.3	60.8
DUT 2	Date: Feb. 03, 2015																				
	S&K GBPC1510																				
	Time track	Phase 1 (DUT on Alu. Rack)												Phase 2 (DUT on office desk)							
	0	5	10	15	20	25	30	35	40	45	50	55	60	65	70	75	80	85	90	95	100
	24.7	35.6	39.9	42	43.3	43.8	44.5	44.6	44.8	45.3	45.1	45.2	44.9	50.6	54.7	56.7	58.2	59.2	59.5	60.3	60.1



DUT 1 Temperature rising

Phase 1 21

Phase 2 35.5

temperature difference: (phase 2 - phase 1) 14.5

DUT 2 Temperature rising

Phase 1 20.2

Phase 2 35.4

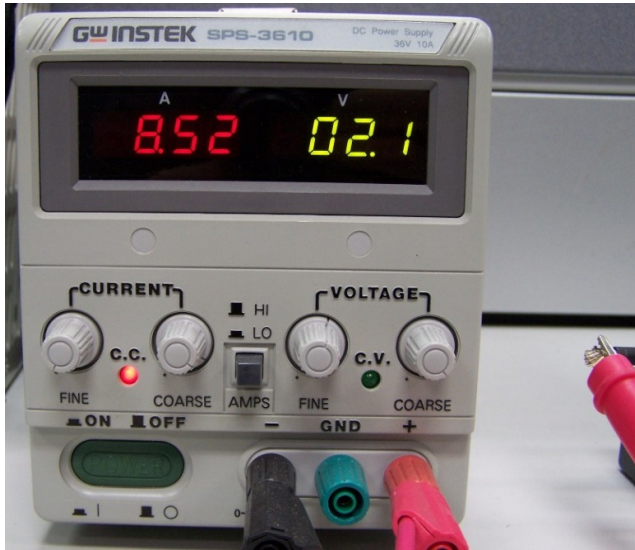
temperature difference: (phase 2 - phase 1) 15.2

Conclusions:

1. Has 15 deg. C lower if DUT be installed on Aluminum rack.
2. Have about 35.5 deg. C added on environment temperature.
3. Keep DUT at relative low temperature spot is important.

Heating measurement

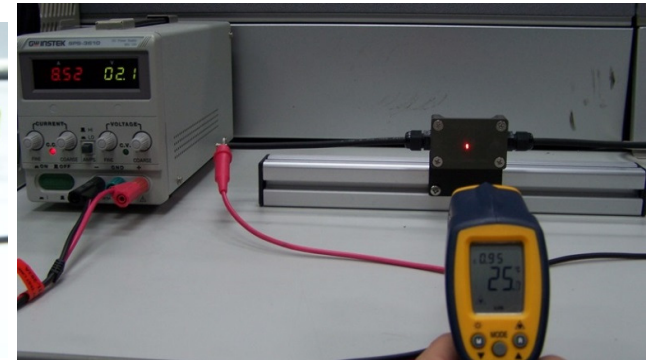
Setting up



Power Supply



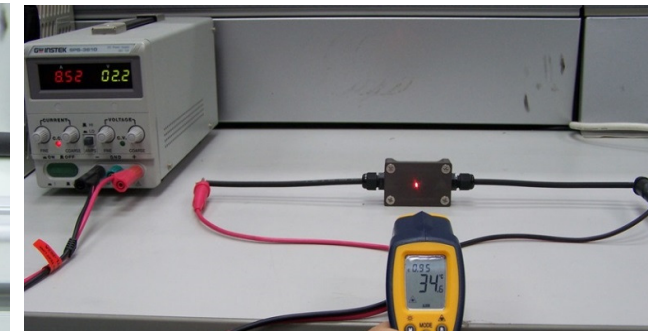
Infrared Thermometer



Phase 1 (DUT on a Aluminum rack)



DUT



Phase 2 (DUT on office desk)